

Inline Vision Systems

# Print Presence

Simple user interface and proven reliability of the Videojet - Laetus Print Presence system enables accurate detection of printed text and codes

Ensure printed code presence.

Seamless integration in a production line.

Improve quality and optimise production efficiency.



- Take a photo of the text
- Process the image and calculate the amount of marking on the product.
- Compare the amount of marking with a threshold reference

## Consumer Confidence

- Increase the quality of the product by assuring that the needed information is fully printed (Best Before Date, LOT, etc)
- 100% quality-inspected products placed into the market.
- Maintain brand quality by ensuring code presence on all products

## Setup made easy

- Setup time is minimised by integral SKU/article management.
- Threshold setup is simplified with a very user friendly operator interface

## Communication & Connectivity

- Remove potential for human error with suite of line integration and code management capabilities.
- Management of marking system codes directly from the Vision controller.
- Multiple cameras/printers can be connected together and be setup from a central point.

## Production Efficiency

- Reduce costs caused by rework, recalls and scrap.
- Fast and reliable set-up and change-over ensures high OEE.
- End-of-Batch report gives Production Managers the best traceability for quality issues.

# Inline Vision Systems

## Print Presence

### User interface and software

Laetus NAVIGATOR for MS Windows

### Languages

English

Further languages at request

### Inspection System

Inspector wt621 smart camera system, 1280x 1024 Pixel, monochrome, max. 50 fps, embedded operating system, 1 Trigger input, 3 input signals for future use, 4 result outputs, integrated LED lighting red/blue, LED class 1, strobe control of external lighting, integrated 9.6 mm lens with software adjustable focus, reading distance 70 ... 1.500 mm, optical indicators (5x status display, 10x LED bar, 1 green feedback), beeper/buzzer, connectivity prepared for Profinet, EtherNet, EtherCAT, PROFIBUS DP

### Print Presence Application

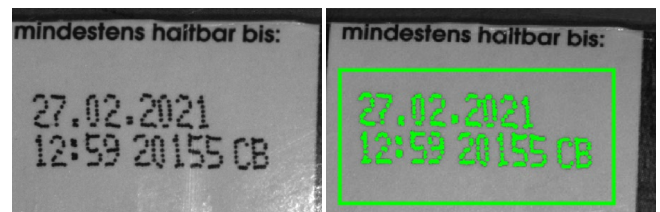
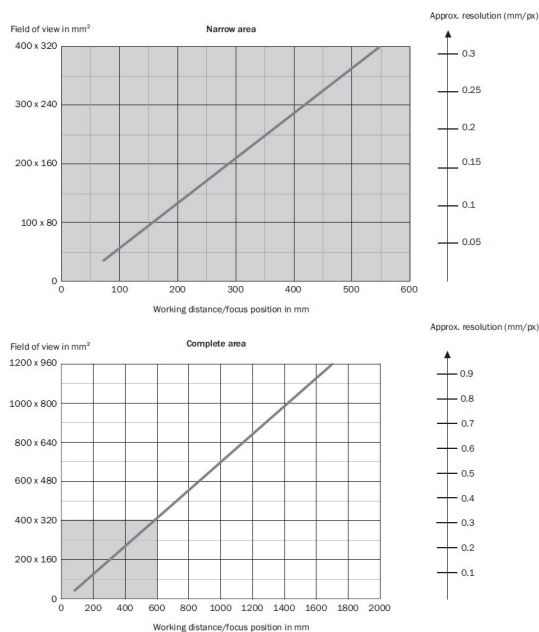
Contrast based pixel counter, standard or inverse printed style, adjustable acceptance level versus trained reference print, configurable print analysis, application window tracker tool.

### Inspection Line speed capability

Depends on application, typically up to 25 Hz

### Working Distance / Field of View

Note! 17.1 mm lens not available!



### Environmental protection

Inspection camera IP65

Option- stainless steel cabinet IP54 (fan less)

### Temperature/humidity range

0°C to 50°C (32°F to 122°F)

0% to 90% RH non-condensing

### Electrical requirements

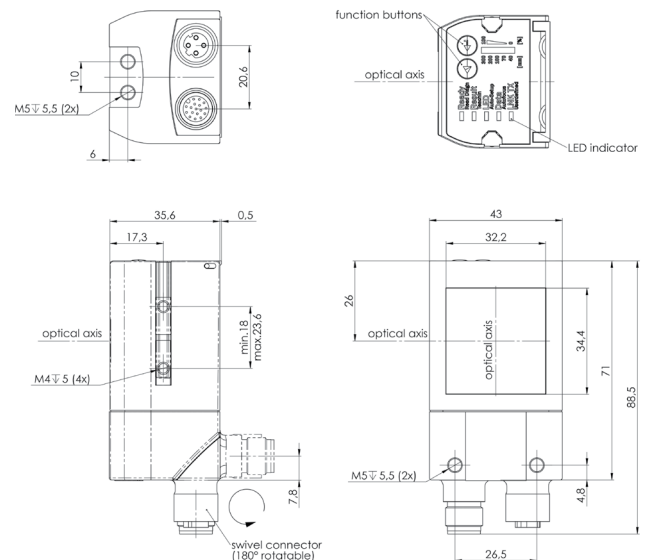
100-240 VAC at 50/60 Hz, approx. 60W, 24V / DV 240W power supply

included 8-port Ethernet Switch included

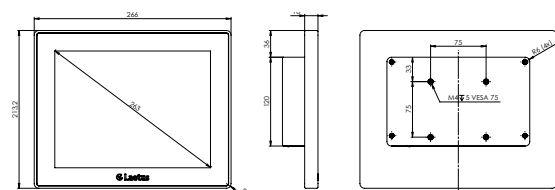
### Package Options

COMMANDER 110S, 10" Touch Panel, Windows 10 IoT Enterprise operating system, 128GB SSD

Electrical cabinet, stainless steel, incl. 24V DC power supply, 8-port Ethernet switch, terminal blocks for 2 inspection cameras, Fault stop signal and indicator



Inspector wt621



COMMANDER 110S

Call us free on **0800 500 3023**

Email **uksales@videojet.com**

or visit **www.videojet.co.uk**

Videojet Technologies Ltd.

4 & 5 Ermine Centre, Huntingdon,  
Cambridgeshire PE29 6XX / UK

Call us free on **+353 1 450 2833**

Email **irelandsales@videojet.com**

or visit **www.videojet.ie**

Videojet Ireland

C2, South City Business Park, Tallaght, Dublin 24 / Ireland

© 2020 Videojet Technologies Inc. — All rights reserved.

Videojet Technologies Inc.'s policy is one of continued product improvement. We reserve the right to alter design and/or specifications without notice.

Part No. SL000696

ss-vj-laetus-print-presence-en-1220

